

## R-481-□



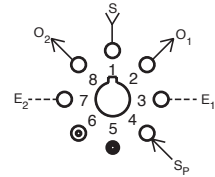
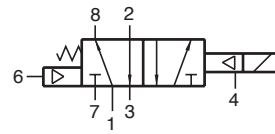
Electronic Valve

**Features:**

- Extremely low power consumption
- Micro gap construction - snap action and no blow by
- Standard octoport plug-in design
- Provides interface between electronics and pneumatics

**Performance:**

**Working Range:** 0 to 150 psig; 0 to 10.3 bars  
**Flow:** 9 scfm @ 100 psig; 255 l/min @ 6.9 bars  
**Pilot Pressure (on port 4):** 40 to 105 psig; 2.8 to 7.2 bars  
**Temperature:** 32 to 180°F  
**Power Consumption:** 0.65 watt at rated voltage



Voltage.....	R-481-6	6 VDC
	R-481-12	12 VDC
	R-481-24	24 VDC

**Duty:** Continuous duty at 150% of rated voltage (50% overload) permissible

**Description:**

R-481 is a fully ported (5-ported), 4-way valve. It is essentially a hybrid valve consisting of the R-401 valve and the Clippard model ET-3 electronic/pneumatic valve. The ET-3 responds to low current, low voltage signals and pneumatically actuates the R-401 4-way valve to which it is attached. A 40 psig pilot pressure must be present at port 4.

## R-482-□



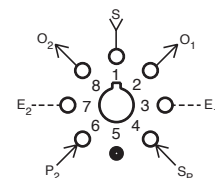
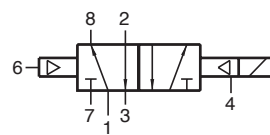
Electronic Valve

**Features:**

- Extremely low power consumption
- Micro gap construction - snap action and no blow by
- Standard octoport plug-in design
- Provides interface between electronics and pneumatics

**Performance:**

**Working Range:** 0 to 150 psig; 0 to 10.3 bars  
**Flow:** 9 scfm @ 100 psig; 255 l/min @ 6.9 bars  
**Pilot Pressure:** 20 to 105 psig; 1.4 to 7.2 bars  
**At Port 6 (min):** 20  
**Temperature:** 32 to 180°F  
**Power Consumption:** 0.65 watt at rated voltage



Voltage.....	R-482-6	6VDC
	R-482-12	12VDC
	R-482-24	24VDC

**Duty:** Continuous duty at 150% of rated voltage (50% overload) permissible

**Description:**

R-482 is a fully ported (5-ported), 4-way valve. It is essentially a hybrid valve consisting of the R-402 valve and the Clippard model ET-3 electronic/pneumatic valve. The ET-3 responds to low current, low voltage signals and pneumatically actuates the R-402 4-way valve to which it is attached. A 20 psig pilot pressure must be present at port 4.